

Outlook 202

Outlook 202 is a large space featuring two interior entrances and two doors that open up onto an outdoor balcony. This room includes two large-screen wall-mounted TVs and several versatile set-up opportunities for meetings, along with embodied movement options thanks to a unique rubber floor. Meeting spaces in Outlook are conveniently located alongside the campus common area — steps away from Common Grounds Café, Joanie’s Garden and Teaching Kitchen, and outdoor patios with fire pits for gathering between sessions.

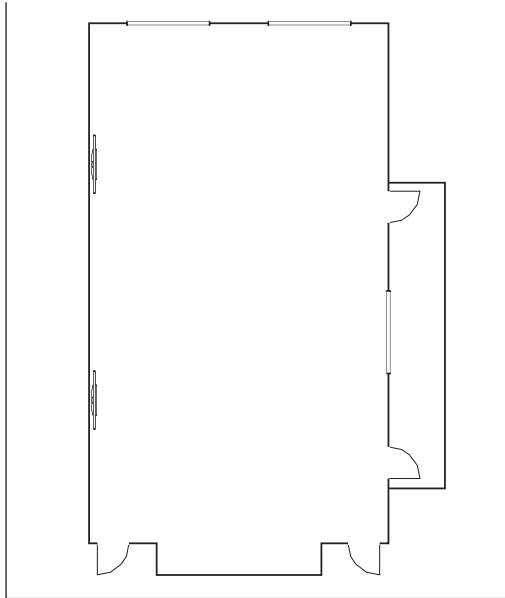
Dimensions & Details

Dimensions (L x W)	Square Feet	Theatre	Classroom	Round (8 per table)	Yoga	Meditation
52' x 28'	1,456	105	72	80	45	65



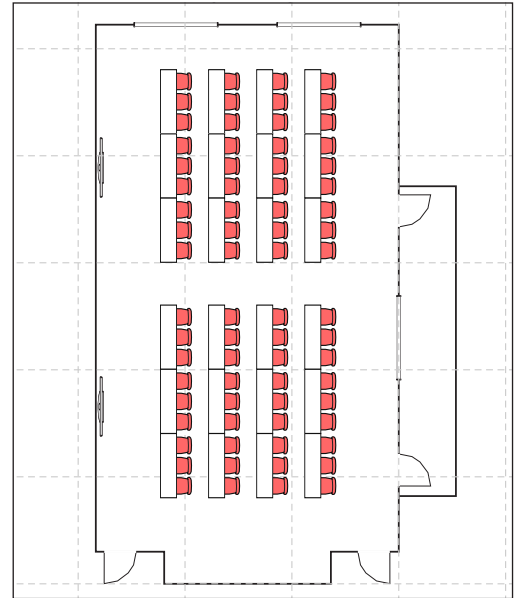
Additional Features

A variation of tables, chairs and props is available. Our production staff will work with your group to accommodate all setup needs. Please inquire about our full list of AV capabilities and technical support staff. *Please note that above rendering is not to scale.*



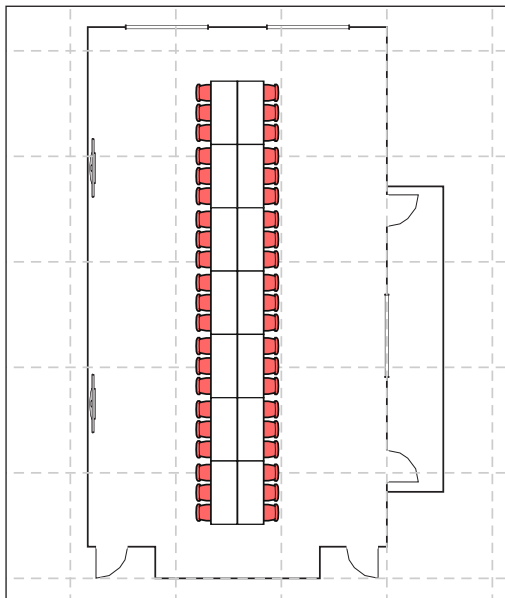
Outlook 202 | Overview

1,456 square feet



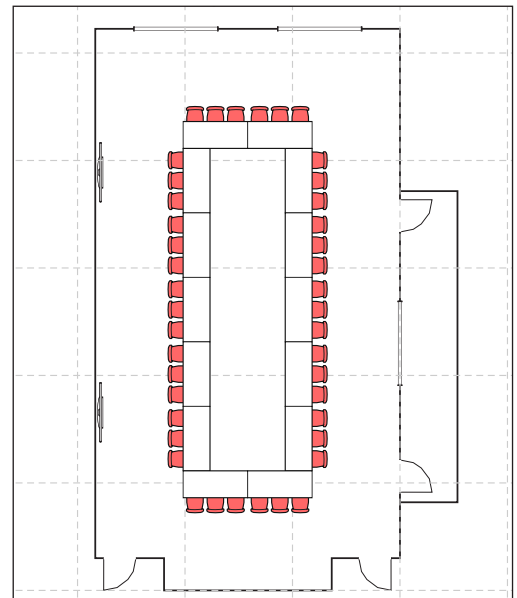
Outlook 202 | Classroom

72 Seats, 24 Tables



Outlook 202 | Conference

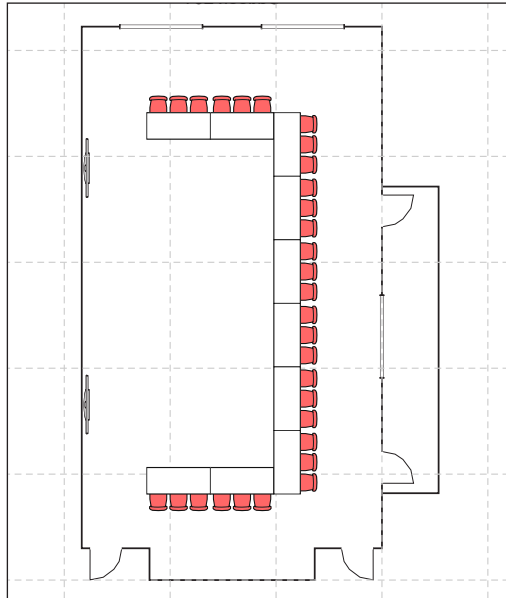
42 Seats, 14 Tables



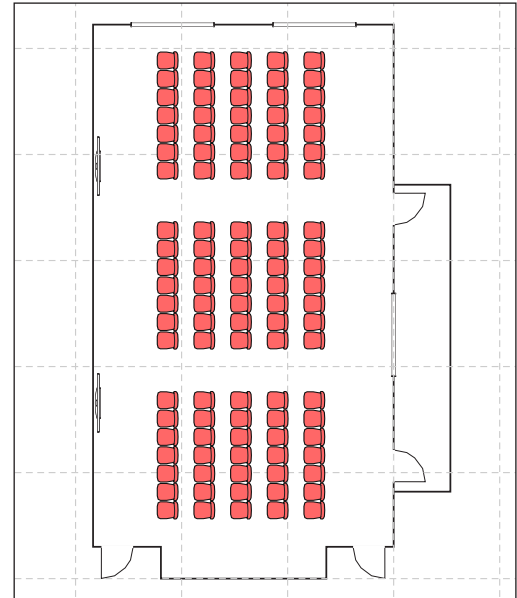
Outlook 202 | Hollow Square

42 Seats, 14 Tables

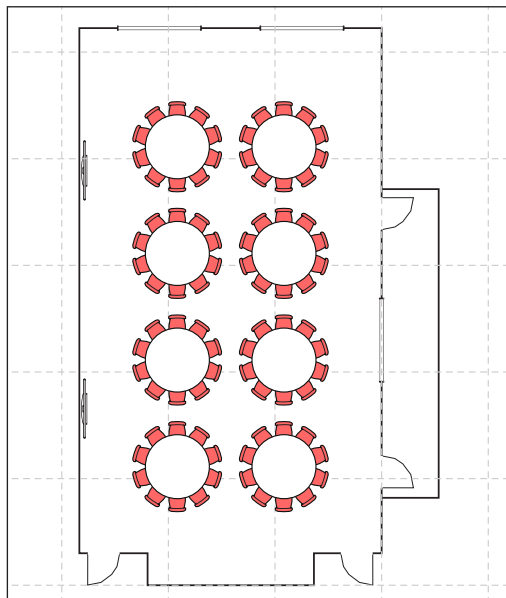
CONTINUED ON NEXT PAGE

**Outlook 202 | U Shape**

30 Seats, 10 Tables

**Outlook 202 | Theatre**

105 Seats, 0 Tables

**Outlook 202 | Rounds**

80 Seats, 8 Tables

Please Note: Diagrams are for illustrative purposes only. Standard sets include theatre only; in most cases custom sets, tables and linens are an additional charge. Please refer to the Meeting Space Design Inventory list for in-house items available and contact the 1440 Program Planning and Events Teams for more information.

