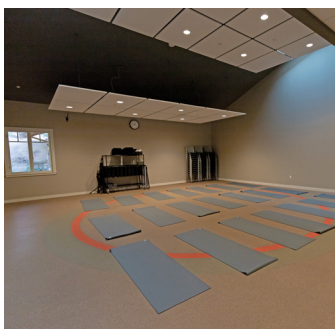
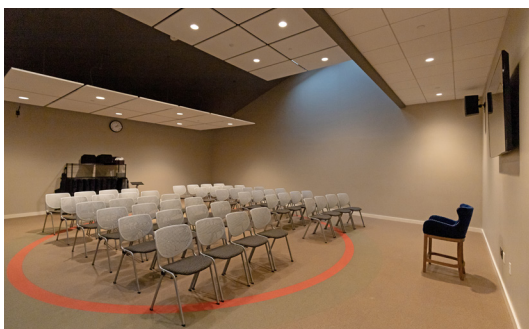


Outlook 203

Outlook 203 includes a large-screen wall-mounted TV and several versatile set-up opportunities for meetings, along with embodied movement options thanks to a unique rubber floor. Meeting spaces in Outlook are conveniently located alongside the campus common area — steps away from Common Grounds Café, Joanie's Garden and Teaching Kitchen, and outdoor patios with fire pits for gathering between sessions.

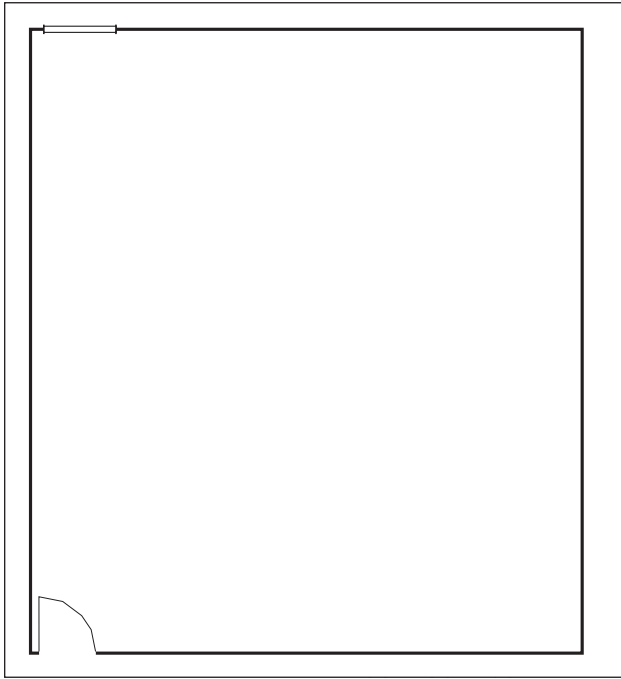
Dimensions & Details

Dimensions (L x W)	Square Feet	Theatre	Classroom	Round (8 per table)	Yoga	Meditation
33' x 29'	957	70	45	40	20	33



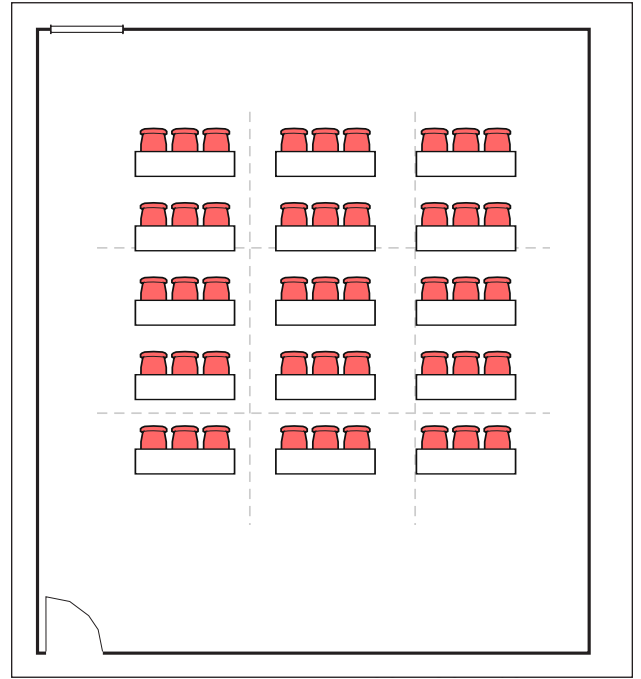
Additional Features

A variation of tables, chairs and props is available. Our production staff will work with your group to accommodate all setup needs. Please inquire about our full list of AV capabilities and technical support staff. *Please note that above rendering is not to scale.*



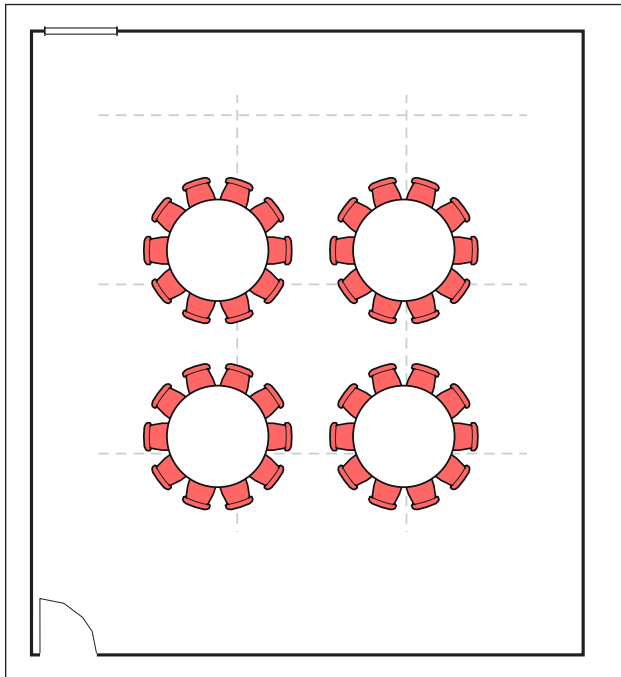
Outlook 203 | Overview

957 square feet



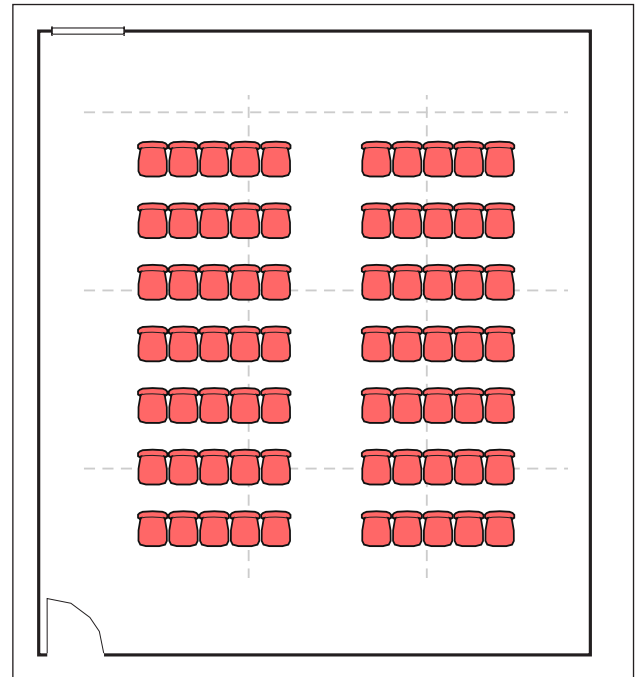
Outlook 203 | Classroom

45 Seats, 15 Tables



Outlook 203 | Rounds

40 Seats, 4 Tables



Outlook 203 | Theatre

70 Seats, 0 Tables

Please Note: Diagrams are for illustrative purposes only. Standard sets include theatre only; in most cases custom sets, tables and linens are an additional charge. Please refer to the Meeting Space Design Inventory list for in-house items available and contact the 1440 Program Planning and Events Teams for more information.