

## Redwood Auditorium

Redwood Auditorium is the main gathering space on campus and purpose-built for large-scale events of up to 600 people. The auditorium is grand and spacious; tall wood-beamed ceilings and a wall of windows and doors bring nature inside. The stage provides a powerful centerpiece for a keynote speaker or meeting set-up, complemented by an adjacent green room. The Redwood Auditorium opens onto the Redwood Deck and into the Redwood Amphitheater, steps away from the Healing Arts Center and Redwood Boardroom located on the lower building level.

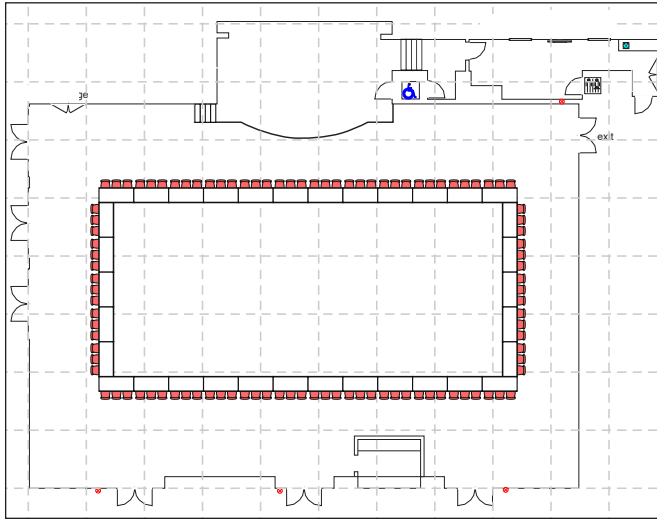
## Dimensions & Details

Dimensions (L x W)	Square Feet	Theatre	Classroom	Round (8 per table)	Yoga
46' x 94'	4,324	600	200	320	200



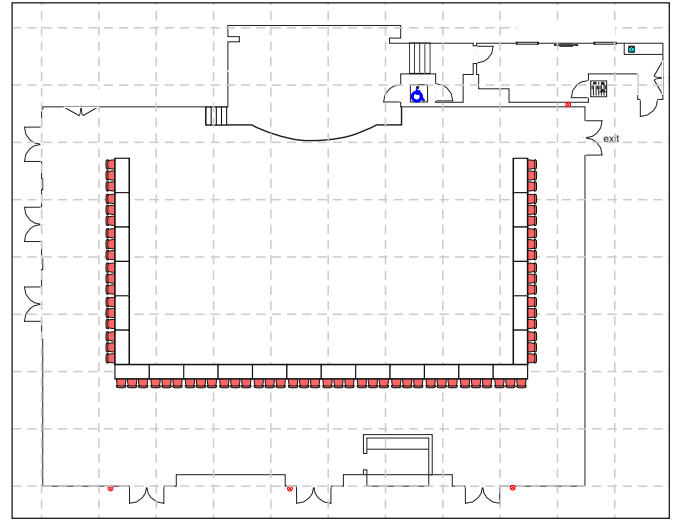
## Additional Features

A variation of tables, chairs and props is available. Our production staff will work with your group to accommodate all setup needs. Please inquire about our full list of AV capabilities and technical support staff. *Please note that above rendering is not to scale.*



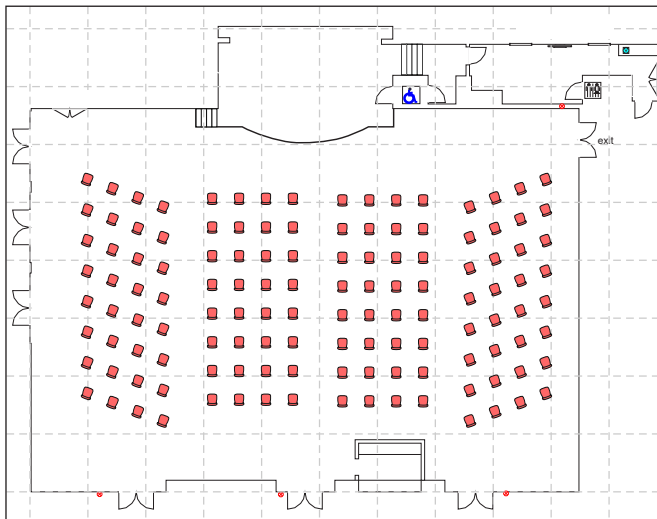
**Redwood Auditorium | *Hollow Square***

102 Seats, 34 Tables



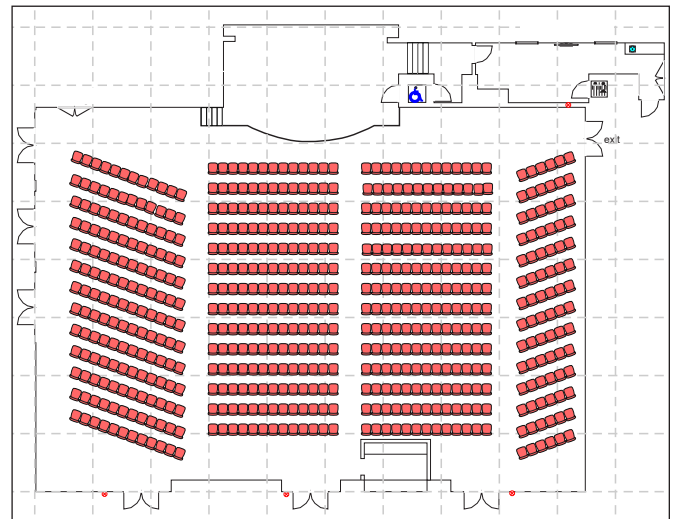
**Redwood Auditorium | *U Shape***

72 Seats, 24 Tables



**Redwood Auditorium | *Theatre***

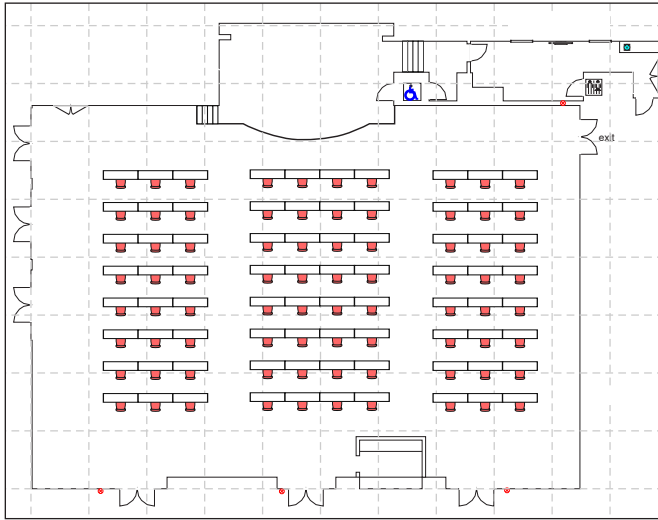
80 Seats, 0 Tables



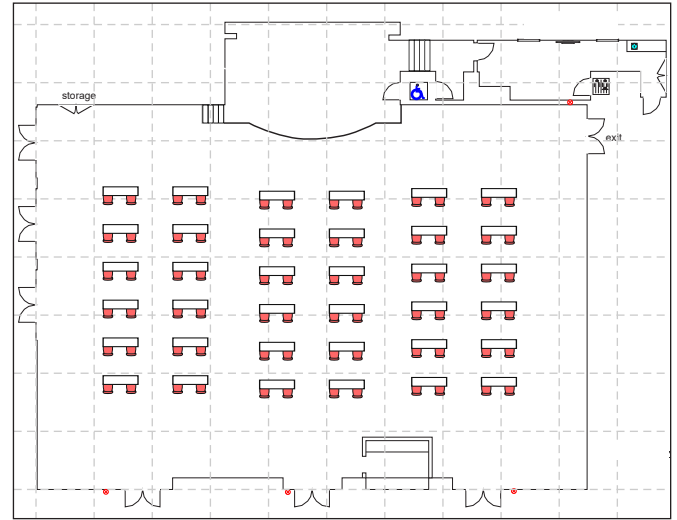
**Redwood Auditorium | *Theatre***

600 Seats, 0 Tables

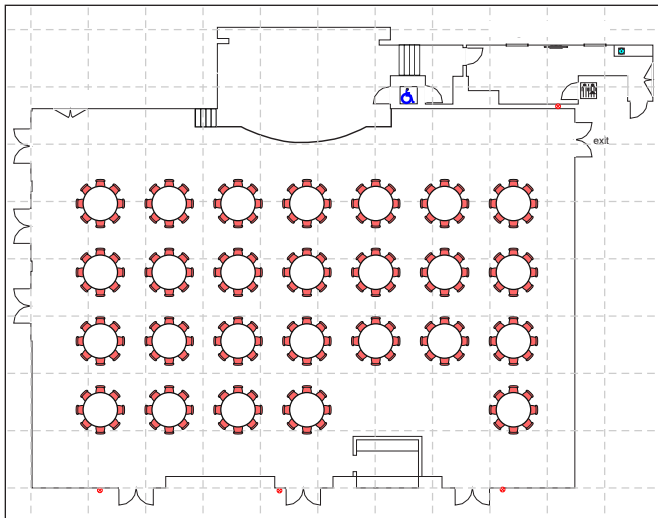
CONTINUED ON NEXT PAGE

**Redwood Auditorium | Classroom**

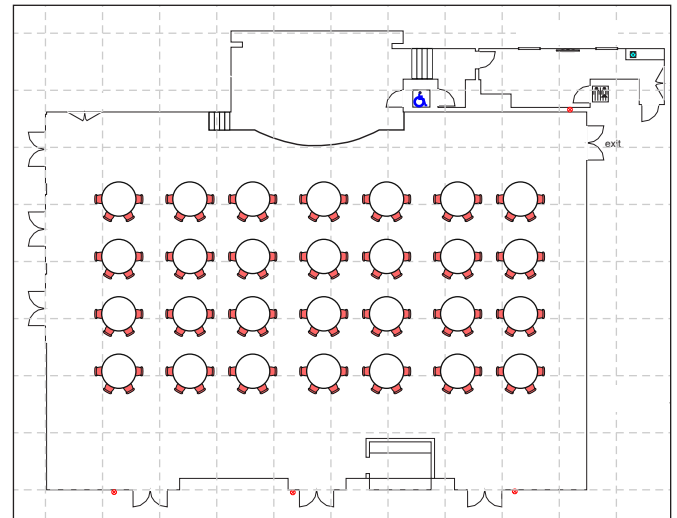
80 Seats, 80 Tables

**Redwood Auditorium | Classroom**

72 Seats, 36 Tables

**Redwood Auditorium | Rounds**

208 Seats, 26 Tables

**Redwood Auditorium | Crescent Rounds**

112 Seats, 28 Tables

**Please Note:** Diagrams are for illustrative purposes only. Standard sets include theatre only; in most cases custom sets, tables and linens are an additional charge. Please refer to the Meeting Space Design Inventory list for in-house items available and contact the 1440 Program Planning and Events Teams for more information.